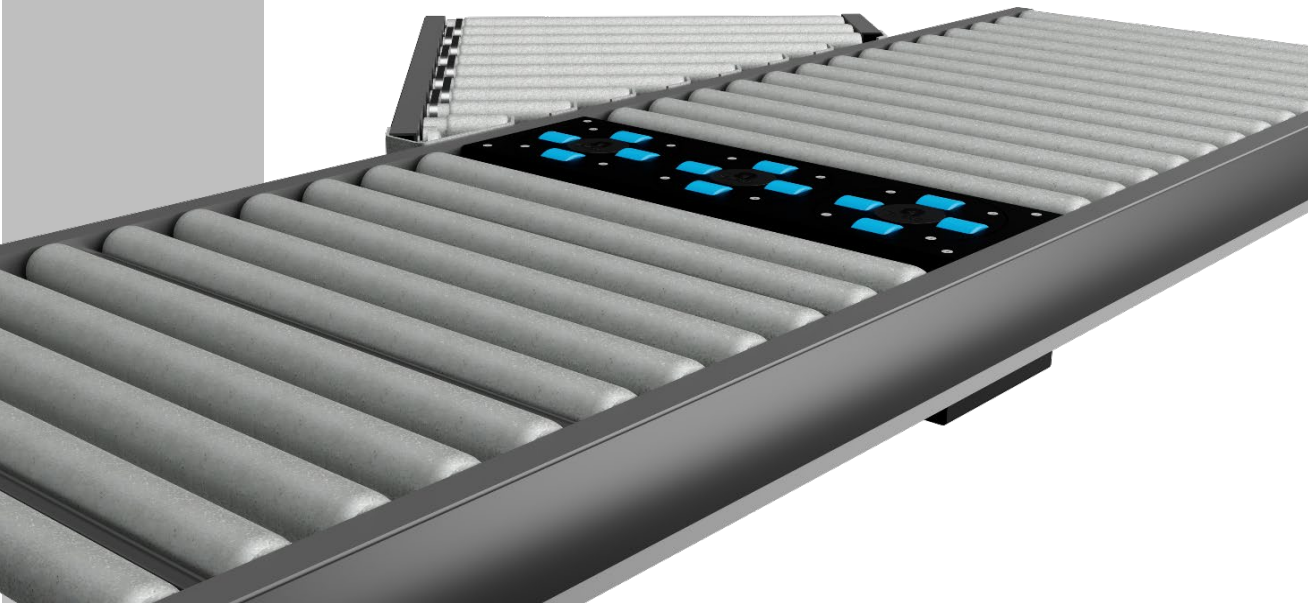
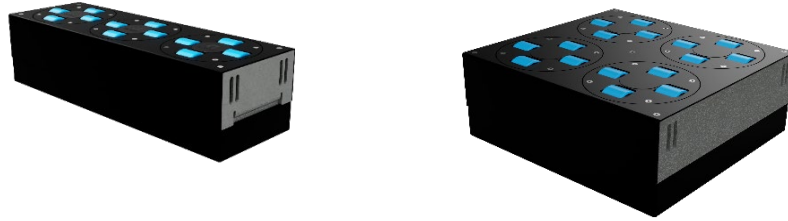


DIVERTER UNIT 24V



SLD-24V-DIVERTER / DLD-24V-DIVERTER

The high speed diverters are designed to build into every conveyor system. It is a modular system which you can configure to your demand. If you need a 3 row system, you connect a SLD (1row) and a DLD (2rows) and ready, all produced as a plug & play system.

The diverters can easily be serviced by removing the wheel from the top with a quick release principle.

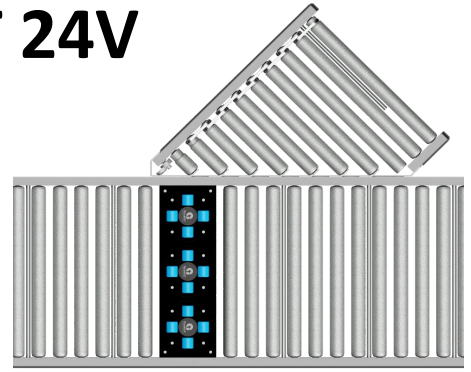
Maxium speed	1,75 m/s
Maxium working load	50 Kg
Rotation speed 0-180 degrees	0,30 sec.
Drive	24V
Controls pulse roller	Profibus or EtherCat
Sizes width	200, 400, 600, 800, 1000mm



Hooge Akker 31
5661 NG, Geldrop
The Netherlands

Telephone: +31630034754
E-mail: info@flow-sort.com
www.flow-sort.com

DIVERTER UNIT 24V



Mechanical information;

Wheel diameter	: \varnothing 180mm
Row length	: 200mm
Standard width	: 400-600-800-1000mm (50mm extension per width possible)
PU wheel diameter	: \varnothing 58mm
PU shore	: 70 ° shore
Diverting angle	: 0 ° till 180 °

Product handling;

	W x L
Min. size product	: 100 x 100mm
Max. size product	: 900 x 1500mm, bigger on request
Min. product height	: 10 mm
Sorting capacity	: max 5000 pph (depending on size and weight)
Min. product weight	: 50 gr.
Max. product weight	: 50 Kg.
Products	: Boxes, polybags, crates etc.

Control information;

Motor rotation	: 24V pulse PGD
Max rotation speed	: 0 ° till 180 ° in 0,30 seconds
Motor PU wheels	: 24V pulse PGD
Max. speed	: 1,75 m/s
Sensors	: 1 home sensor per row
Control	: 1 control for both motors, and sensors
	: ZPA Logic built in to save time on commissioning
	: On-board PLC feature - Write your own program
	: Standard I/O pin out via M8 connector
	: Ethernet or Profinet available

